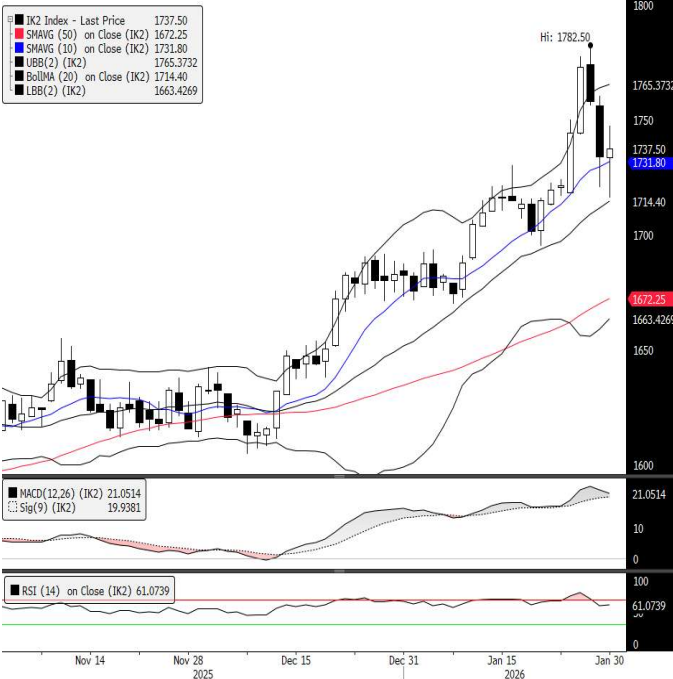


FBMKLCI Futures daily chart



Preview

Fundamental

Expect futures to continue its upward trust today following gains in overnight Wall Street after a solid economic reading supported sentiment and encouraging domestic economic landscape while losses in crude oil prices and ahead of company earnings along with global central bank monetary meeting might limit the upside. Overnight leads, U.S. stock markets ended Monday's trading session on a positive note, shaking off AI trade worries as earnings flooded in and Federal Reserve uncertainty swirled. On the external front, Asian stock markets fell on Monday, led by weakness in Chinese and Hong Kong shares as a rout in commodities markets hit sentiment across the region following the choice of Kevin Warsh as the next Fed chair set off a wave of selling in risk assets along with disappointing China manufacturing activity data and deteriorating fiscal revenue. At home, the FBM KLCI pared previous session losses to end higher on Friday, as eleventh hour buying interest notably in financial services counters and healthcare stocks aided cushion the index while broader market softness amid weakness in technology stocks and ahead of long holiday weekend in Malaysia capped further gains. The index closed at 1,740.88, gained 9.99 points, with top gainers were HLBK, RHBBANK, MAY, CIMB and IHH shares. Futures to cash basis remained at Par.

Technical

Futures contract moved on a cautious tone at the open before climbing steadily to end in positive territory lifted by strength the underlying cash market while cautious sentiment prevail across regional equities capped gains. The January futures contract settled 9.5 points higher at 1,740.0, cumulated gains of 3.91% m-o-m. In addition, the newly listed spot month February futures contract closed 3.5 points higher at 1,737.5, forming a short white bodied candlestick pattern with short upper shadow and long bottom shadow, indicating bulls seized control of the session from the bears. Technical viewpoint, MACD indicator issued a buy signal while RSI indicator is lingering in a neutral region. Hence, expect futures to trade range bound with upward bias following strong performance in overnight U.S. equities market while upside might be limited on crude oil weakness and ahead of company earnings along with major central bank policy decision. Therefore, the support and resistance can be found at 1,725.0 and 1,750.0 respectively.

IK2 Index (Generic 2nd 'IK' Future) DAILY REPORT CHART Daily 01NOV2025-30JAN2026 Copyright© 2026 Bloomberg Finance L.P. 30-Jan-2026 20:16:22

Source: Bloomberg

Contract	Sett	Change	High	Low	Volume	Open Int	O/I chg		Open Interest		Previous Week		
							Value USD	3mth avg	Value USD	High	Low		
FBMKLCI	1740.88	9.99	1744.82	1732.62	303 Mn	34,618	446	9.82 Mn	31,238	687.55 Mn	1771.25	1719.52	
FEB 26	1737.50	3.50	1747.50	1716.00	11,412	3,618	-13	-28 Mn	8,449	183.61 Mn	1687.00	1662.50	
MAR 26	1715.50	1.50	1726.00	1697.00	338	1,593	2	.04 Mn	947	20.61 Mn	1638.00	1614.50	
JUN 26	1718.50	1.50	1724.50	1702.50	25	85	0	. Mn	537	11.70 Mn	1625.00	1602.00	
SEP 26	1718.50	0.50									0.00	0.00	
							11,775	36,296	435	9.58 Mn	41,171	903.47 Mn	

Futures Fair Value

Contract	Exp. Date	KLIBOR			KF Est		
		Index Pt	Div ldx Pt (Gross)	FV	Div ldx pt (Net)	FV	
FEB 26	27/2/2026	3.41	0.70	2.71	0.70	2.71	
MAR 26	31/3/2026	7.96	26.51	-18.55	26.51	-18.55	
Roll FV				-21.27		-21.27	

Benchmark Indices

Source: Bloomberg	Last	1d Chg	6m Chg	Relative to FBMKLCI	
				3m Chg	6m Chg
FBMKLCI	1740.88	0.58%	13.53%	-10.08%	-10.60%
FBM100	12562.02	0.50%	11.31%	-1.03%	-1.96%
FBMEMAS	12745.99	0.43%	10.59%	-1.69%	-2.59%

Local Sector Performance againts FBMKLCI

Sector	Last	1d Chg	3m Chg	6m Chg
Financial		1.18%	9.49%	8.39%
Plantation		-0.58%	-3.19%	-0.05%
Utilities		0.00%		0.00%

Currencies

	Last	1d Chg	3m Chg	6m Chg
USDMYR	3.9470	0.45%	-5.93%	-6.98%
CNYMYR	0.5677	-0.05%	-3.75%	-3.84%
Dollar Index (DXY)	97.632	0.66%	-2.18%	-1.52%
MYR to DXY		0.21%	4.00%	5.87%

World Equity Indices

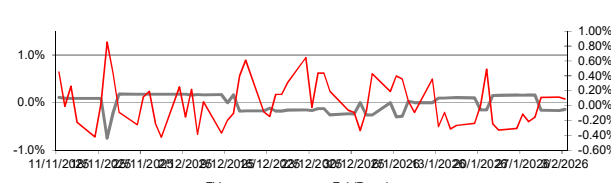
Source: Bloomberg	Last	1d Chg	6m Chg	Relative to FBMKLCI	
				3m Chg	6m Chg
USA					
Dow Jones	49407.66	1.05%	13.35%	-3.19%	-0.16%
S&P 500	6976.44	0.54%	11.84%	-4.95%	-1.49%
NASDAQ	23592.11	0.56%	14.25%	-7.33%	0.63%
Europe					
DAX	24797.52	1.05%	5.85%	-3.54%	-6.76%
CAC	8181.17	0.67%	8.42%	-6.11%	-4.51%
FTSE100	10341.56	1.15%	14.04%	-0.82%	0.44%
EURO Stoxx	617.31	1.03%	15.21%	0.60%	1.48%
Asia Pacific					
Nikkei 225	52655.18	-1.25%	29.06%	-6.37%	13.67%
Hang Seng	26775.57	-2.23%	9.25%	-3.68%	-3.77%
Straits Times	4892.27	-0.26%	17.78%	2.59%	3.74%
KOSPI	4949.67	-5.26%	58.67%	9.26%	39.76%
TAIEX	31624.03	-1.37%	34.95%	4.01%	18.86%
S&P/ASX200	8893.00	1.30%	2.67%	-6.82%	-9.57%

U.S. markets

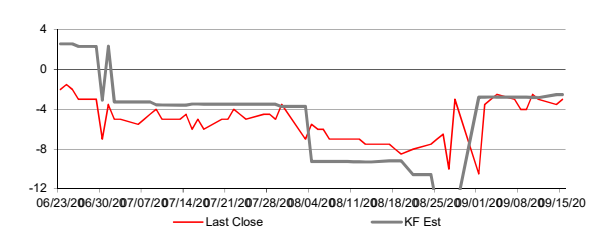
The S&P 500 closed higher on Monday, lifted by gains in chipmakers and other companies related to artificial intelligence, while smaller companies also rose sharply. - Reuters

Contract	Sett	Change	High	Low	Volume	Open Int	O/I chg		Open Interest		Previous Week		
							Value USD	3mth avg	Value USD	High	Low		
FBMKLCI	1740.88	9.99	1744.82	1732.62	303 Mn	34,618	446	9.82 Mn	31,238	687.55 Mn	1771.25	1719.52	
FEB 26	1737.50	3.50	1747.50	1716.00	11,412	3,618	-13	-28 Mn	8,449	183.61 Mn	1687.00	1662.50	
MAR 26	1715.50	1.50	1726.00	1697.00	338	1,593	2	.04 Mn	947	20.61 Mn	1638.00	1614.50	
JUN 26	1718.50	1.50	1724.50	1702.50	25	85	0	. Mn	537	11.70 Mn	1625.00	1602.00	
SEP 26	1718.50	0.50									0.00	0.00	
							11,775	36,296	435	9.58 Mn	41,171	903.47 Mn	

Premium to Fair



Futures Roll



FBMKLCI Volatility

