

### Fundamentals:

Hong Kong stocks rose for a second day amid a mixed bag of corporate earnings results and investors retained hopes of further fiscal or monetary stimulus from Beijing to arrest a slump in confidence and growth.

The Hang Seng Index advanced 0.3 per cent to 17,845.92 at the close. The Tech Index added 0.2 per cent and the Shanghai Composite Index retreated 1.3 per cent.

China's leading search engine provider Baidu advanced 4.4 per cent to HK\$128.40 after revenue rose 15 per cent last quarter from a year ago, boosted by advertising spending. Anta Sports Products jumped 9.7 per cent to HK\$85.20 after first-half profit beat estimates. China Life Insurance added 0.7 per cent to HK\$11.30 and Construction Bank also rose 0.7 per cent to HK\$4.09 as both prepare to issue their report cards later on Wednesday.

Among top decliners, Country Garden slumped 6.7 per cent to HK\$0.70 after the Chinese developer missed interest payments on its bonds. Sunny Optical fell 2.4 per cent to HK\$63.05 after half-year profit tumbled 68 per cent from a year earlier.

Sentiment remains fragile as investors fret over the absence of forceful stimulus from China to boost its economy and markets. Measures unveiled after late July's Politburo meeting, including a cut in benchmark lending rate, were deemed insufficient. The Hang Seng Index has weakened 10 per cent this year, among the worst-performing stock benchmarks worldwide.

Some 40 Hang Seng Index members have released their quarterly or interim results so far, recording an average 3.7 per cent drop in profit, according to Bloomberg data. Last year, the index members posted an average 5.5 per cent increase in earnings.

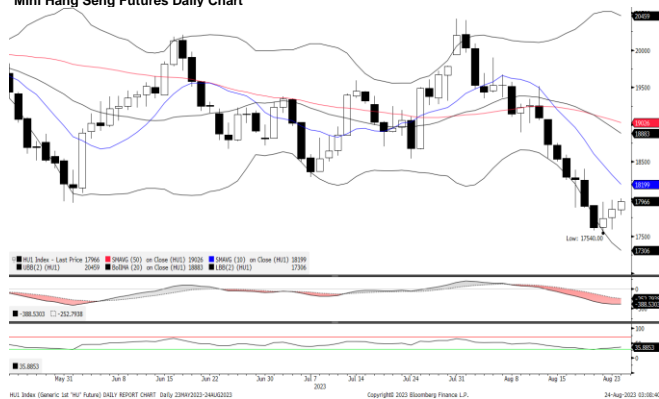
Elsewhere, China's finance ministry said onshore traders will continue to enjoy a tax holiday on gains from trading stocks and mutual funds via the Stock Connect link with Hong Kong until end-2027.

Three companies debuted on Wednesday. Shanghai Zhongchen Electronic Technology rose 29 per cent to 64.57 yuan in Shanghai while Nanjing Wavelength Opto-Electronic Science and Technology surged 78 per cent to 52.29 yuan in Shenzhen. Shandong Guozi Software climbed 70 per cent to 17.90 yuan in Beijing.

Other major Asian markets were mixed. Japan's Nikkei 225 climbed 0.5 per cent, while South Korea's Kospi retreated 0.4 per cent and Australia's S&P/ASX 200 added 0.4 per cent.

(Source: South China Morning Post)

### Mini Hang Seng Futures Daily Chart



### Mini Hang Seng China Enterprise Futures Daily Chart



Contracts	Chg	Sett	High	Low
H. SENG FUT AUG 23	126	17864	17990	17589
H. SENG FUT SEP 23	115	17820	17948	17548
H. SENG FUT DEC 23	125	17984	18098	17748
H. SENG FUT MAR 24	126	17864	17990	17589
MINI H. SENG FUT AUG 23	126	17864	17990	17589
MINI H. SENG FUT SEP 23	115	17820	17948	17548
MINI H. SENG FUT DEC 23	125	17984	18112	17715
MINI H. SENG FUT MAR 24	126	17864	17990	17589
HSCEI FUT AUG 23	40	6128	6180	6031
HSCEI FUT SEP 23	36	6108	6161	6016
HSCEI FUT DEC 23	37	6188	6230	6131
HSCEI FUT MAR 24	40	6128	6180	6031
MINI HSCEI FUT AUG 23	40	6128	6180	6031
MINI HSCEI FUT SEP 23	36	6108	6161	6014
MINI HSCEI FUT DEC 23	37	6188	6223	6123
MINI HSCEI FUT MAR 24	40	6128	6180	6031

Major HSI Constituent Stocks	Close	Change	High	Low
*AIA Group Ltd	69.95	1.7	70.7	68.4
**Tencent Holdings Ltd	318	-1	321.4	317
**HSBC Holdings PLC	58.4	-0.15	58.65	58.1
**China Construction Bank Corp	4.09	0.03	4.12	4.06
**Ping An Insurance Group	44.2	0.15	44.7	43.65
**Meituan	130.3	1.1	133.2	127.3
*Hong Kong Exchanges & Clearing Ltd	280.6	-3.4	283.8	280
**Alibaba Group Holdings Ltd	87.3	-0.05	88.2	86.1
**Xiaomi Corp	11.74	0.26	11.82	11.38
**ICBC	3.42	0.02	3.46	3.39

Major HSCEI Constituent Stocks	Close	Change	High	Low
*Wuxi Biologics Cayman Inc	41.1	0.55	41.5	40.05
**China Mobile Ltd	65	0.2	65.6	64.3
**Bank of China Ltd	2.62	0.01	2.64	2.61
*Techtronic Industries Co Ltd	79.1	-1.95	80.75	78.35
*CK Hutchison Holdings Ltd	41.05	0.05	41.25	40.55
*Link REIT	37.4	-0.25	37.7	37.15
*CLP Holding Ltd	58.45	-0.15	58.6	58
**Geely Automobile Holdings Ltd	9.2	-0.1	9.31	9.1
**CNOOC Ltd	12.72	0	12.94	12.64
**ANTA Sports Products Ltd	85.2	7.55	87.1	81.05

Global Equity Indices	Close	Change	High	Low
Hang Seng	17845.92	54.91	18000.5	17730.79
HSCEI	6117.27	19.68	6177.01	6065.89
Shanghai Comp Index	3078.4	-41.932	3116.38	3077.606
Nikkei 225	32010.3	153.55	32039.6	31717.91
KOSPI	2505.5	-10.24	2517.51	2499.89
S&P/ASX200	7148.42	26.809	7174.2	7115.8
DJIA	34473	184.15	34534.7	34321
S&P 500	4436.01	48.46	4443.18	4396.44
NASDAQ	13721	215.16	13757	13532.43
DAX	15728.4	22.79	15821	15672.43
CAC	7246.62	0.08	7295.36	7224.07
FTSE100	7320.53	49.77	7348.84	7270.76

### Technical Analysis

#### Mini Hang Seng

1st Resistance:	18132	2nd Resistance:	18400
1st Support:	17596	2nd Support:	17328
MACD:	-386.417		
MACD DIFF:	-167.34		
RSI:	33.4465		

#### Mini Hang Seng China Enterprise

1st Resistance:	6220	2nd Resistance:	6312
1st Support:	6036	2nd Support:	5944
MACD:	-116.091		
MACD DIFF:	-61.595		
RSI:	36.6215		

### Strategy:

<b>Mini Hang Seng:</b>	Long: Profit target: 17596	Stop-loss: 17772	17508	Long: Profit target: 17328	Stop-loss: 17501	17241
------------------------	----------------------------	------------------	-------	----------------------------	------------------	-------

Short: Profit target: 18132	Stop-loss: 17951	18223	Short: Profit target: 18400	Stop-loss: 18216	18492
-----------------------------	------------------	-------	-----------------------------	------------------	-------

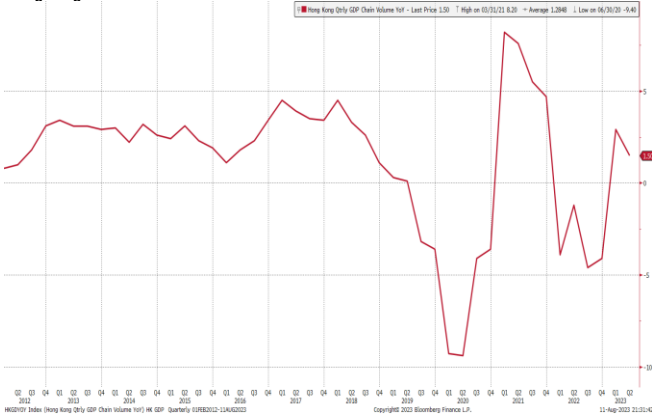
<b>Mini Hang Seng China Enterprise:</b>	Long: Profit target: 6036	Stop-loss: 6096	6006	Long: Profit target: 5944	Stop-loss: 6004	5914
---	---------------------------	-----------------	------	---------------------------	-----------------	------

Short: Profit target: 6220	Stop-loss: 6158	6251	Short: Profit target: 6312	Stop-loss: 6249	6343
----------------------------	-----------------	------	----------------------------	-----------------	------

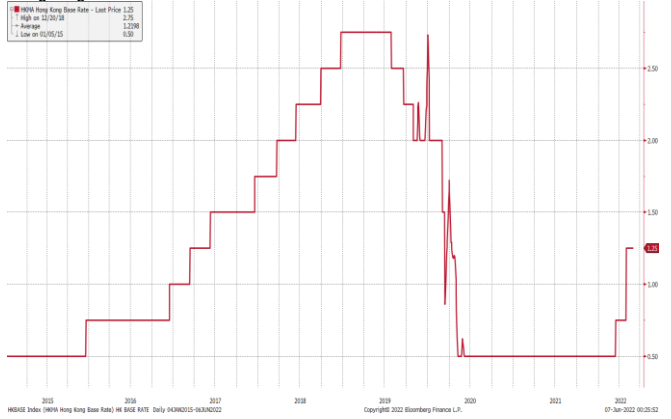
Hong Kong Economic Releases		Period	Survey	Actual	Prior	Revised
08/24/2023 16:30	Exports YoY	Jul	-8.80%	--	-11.40%	--
08/24/2023 16:30	Imports YoY	Jul	-5.90%	--	-12.30%	--
08/24/2023 16:30	Trade Balance HKD	Jul	-41.3b	--	-56.6b	--
08/31/2023 16:30	Retail Sales Value YoY	Jul	--	--	19.60%	--
08/31/2023 16:30	Retail Sales Volume YoY	Jul	--	--	17.50%	--
08/31/2023	Money Supply M3 HKD YoY	Jul	--	--	-0.10%	--
08/31/2023	Budget Balance HKD	Jul	--	--	-30.0b	--
08/31/2023	Money Supply M1 HKD YoY	Jul	--	--	-21.70%	--
08/31/2023	Money Supply M2 HKD YoY	Jul	--	--	-0.10%	--

China Economic Releases		Period	Survey	Actual	Prior	Revised
08/24/2023 09:00	Swift Global Payments CNY	Jul	--	--	2.77%	--
08/27/2023 09:30	Industrial Profits YoY	Jul	--	--	-8.30%	--
08/27/2023 09:30	Industrial Profits YTD YoY	Jul	--	--	-16.80%	--
08/28/2023 10:00	Bloomberg Aug. China Economic Survey					
08/31/2023 09:30	Composite PMI	Aug	--	--	51.1	--
08/31/2023 09:30	Manufacturing PMI	Aug	49	--	49.3	--
08/31/2023 09:30	Non-manufacturing PMI	Aug	50.8	--	51.5	--

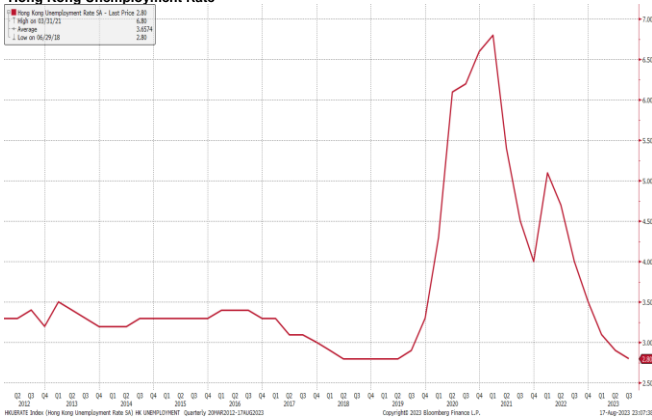
### Hong Kong GDP Q on Q



### Hong Kong Base Interest Rate



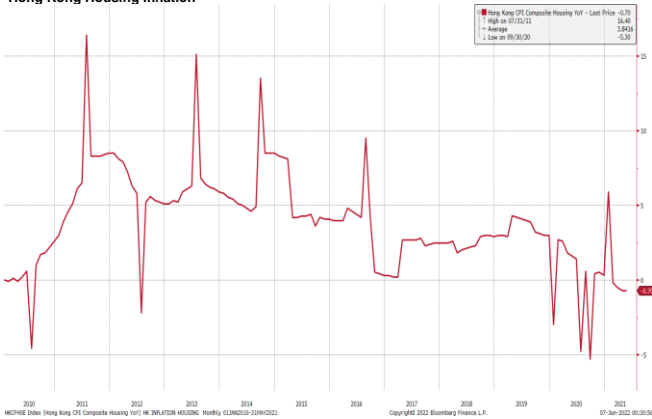
### Hong Kong Unemployment Rate



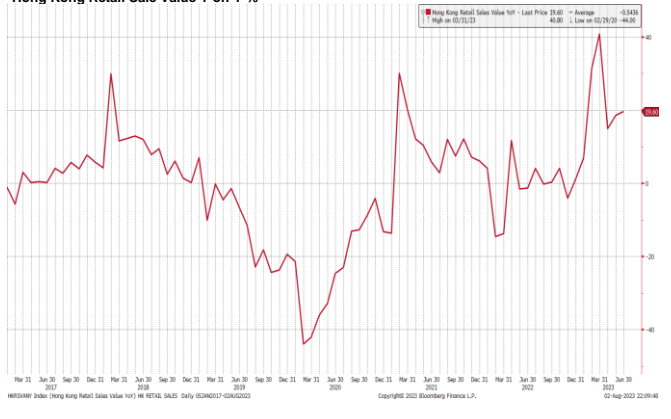
### Hong Kong Composite Inflation



### Hong Kong Housing Inflation



### Hong Kong Retail Sales Value Y on Y %



(Source: Bloomberg)

Kenanga Futures Sdn Bhd (353603-X)

Dealing Desk: (603) 2172 3820 Fax: (603) 2172 2729 Email: futures@kenanga.com.my

Disclaimer: This document has been prepared for general circulation based on information obtained from sources believed to be reliable but we do not make any representations as to its accuracy or completeness.

Any recommendation contained in this document does not have regard to the specific investment objectives, financial background and the particular needs of any person who may read this document.

This document is for the information of addressees only and is not to be taken in substitution for the exercise of judgement and assessment by addressees in relation to any investment decision.

Kenanga Futures Sdn Bhd accepts no liability whatsoever for any direct or consequential loss arising from any use of this document or any solicitations of an offer to buy or sell any securities/underlying securities.

Kenanga Futures Sdn Bhd and its associates, their directors, and/or employees may have positions in, and may effect transactions in securities/underlying securities mentioned herein from time to time in the open market or otherwise, and may receive brokerage fees or act as principal or agent in dealings with respect to these companies.