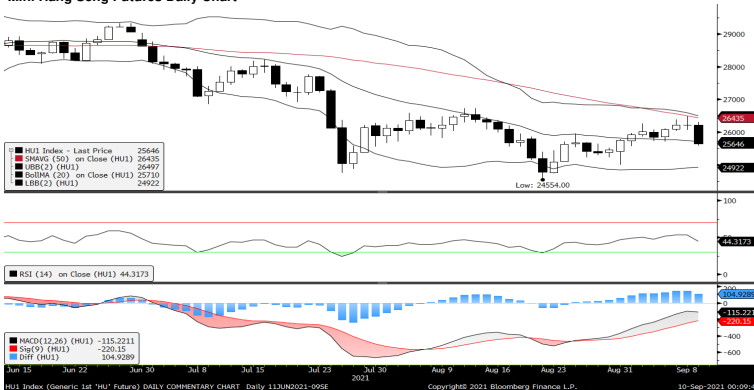
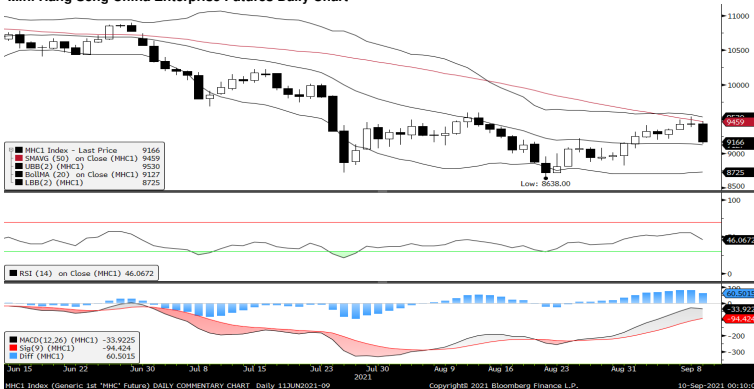


Mini Hang Seng Futures Daily Chart



Mini Hang Seng China Enterprise Futures Daily Chart



Contracts	Chg	Sett	High	Low	Volume	Open Int	O/I Chg
H. SENG FUT SEP 21	-567	25646	26311	25581	134558	102324	3229
H. SENG FUT OCT 21	-569	25640	26301	25588	842	722	124
H. SENG FUT DEC 21	-573	25625	26279	25606	213	4349	-39
H. SENG FUT MAR 22	-570	25565	26200	25600	27	422	1
MINI H. SENG FUT SEP 21	-567	25646	26312	25581	1	12824	-287
MINI H. SENG FUT OCT 21	-569	25640	26308	25581	1462	583	-12
MINI H. SENG FUT DEC 21	-573	25625	26282	25569	528	1157	-16
MINI H. SENG FUT MAR 22	-570	25565	26217	25515	161	438	29
HSCEI FUT SEP 21	-264	9166	9467	9141	105856	231665	2010
HSCEI FUT OCT 21	-265	9165	9446	9145	669	5019	75
HSCEI FUT DEC 21	-265	9167	9461	9145	346	85900	114
HSCEI FUT MAR 22	-263	9174	9444	9165	1633	10411	1610
MINI HSCEI FUT SEP 21	-264	9166	9466	9139	14816	4402	1044
MINI HSCEI FUT OCT 21	-265	9165	9468	9142	378	256	-14
MINI HSCEI FUT DEC 21	-265	9167	9450	9150	189	931	36
MINI HSCEI FUT MAR 22	-263	9174	9470	9150	101	144	19

Global Equity Indices	Close	Change	High	Low	ATR(14)	SMA (10)	SMA (50)
Hang Seng	25,716.00	-604.930	26,125.09	25,624.52	461.98	25,940	26,506
HSCEI	9,183.58	-265.810	9,343.95	9,149.07	194.12	9,251	9,483
Shanghai Comp Index	3,693.13	17.943	3,693.45	3,662.16	44.53	3,601	3,520
Nikkei 225	30,008.19	-173.020	30,097.56	29,909.92	380.00	28,941	28,148
KOSPI	3,114.70	-48.290	3,158.60	3,111.49	37.52	3,173	3,214
S&P/ASX200	7,369.53	-142.486	7,512.00	7,344.30	73.05	7,500	7,443
DJIA	34,879.38	-151.690	35,199.89	34,847.30	245.42	35,257	35,036
S&P 500	4,493.28	-20.790	4,529.90	4,492.07	27.73	4,515	4,421
NASDAQ	15,248.25	-38.390	15,352.38	15,245.17	122.62	15,251	14,814
DAX	15,623.15	12.870	15,693.22	15,453.96	166.76	15,803	15,708
CAC	6,684.72	15.830	6,708.33	6,605.09	69.78	6,708	6,646
FTSE100	7,024.21	-71.320	7,095.53	6,998.62	65.61	7,130	7,097

Heavyweight Counters Performance	Close	Change	High	Low	P/E	P/Book
*AIA Group Ltd	93.35	-1.3	94.3	92.65	21.2089	2.4631
**Tencent Holdings Ltd	480	-44.5	511.5	479	20.1296	4.5176
**HSBC Holdings PLC	40.4	-0.05	41	40.25	11.3447	0.6035
**China Construction Bank Corp	5.68	0.01	5.71	5.62	4.2125	0.5043
**Ping An Insurance Group	59.6	-1.45	60.25	59.35	6.4755	1.1376
**Meituan	248.6	-12.4	258	245.6	#N/A N/A	9.3764
*Hong Kong Exchanges & Clearing Ltd	492.2	-5.8	497.8	488.4	48.2988	12.5456
**Alibaba Group Holdings Ltd	161	-9.9	166.1	160.3	#N/A N/A	#N/A N/A
**Xiaomi Corp	23.6	-0.9	24.2	23.5	16.1938	2.9431
**ICBC	4.41	-0.03	4.44	4.39	4.0755	0.4771
*Wuxi Biologics Cayman Inc	119.8	-2.2	124.7	119	147	12.6848
**China Mobile Ltd	48.25	-0.4	48.85	48.1	7.3703	0.6961
*Bank of China Ltd	2.77	0.01	2.77	2.75	3.3642	0.3748
*Techtronics Industries Co Ltd	166.1	1.3	167.8	164.3	39.3444	9.1789
*CK Hutchison Holdings Ltd	54	-0.8	54.95	54	6.0428	0.4045
*Link REIT	69.9	-0.1	70.95	69.35	125.5471	0.9168
*CLP Holding Ltd	76.25	-0.05	76.8	76.25	19.1314	1.7195
**Geely Automobile Holdings Ltd	27.1	-0.65	28	26.5	40.7616	3.5859
**CNOOC Ltd	7.87	0.14	7.97	7.7	6.0682	0.6384
**ANTA Sports Products Ltd	161.6	-4.3	167	159	49.1155	13.4356

* HSI Component; ** Hang Seng & HSCEI Component
(Source: Bloomberg)

Fundamentals:

Hong Kong stocks fell by the most in six weeks as concerns about regulatory tightening in China revived after Beijing chastised mobile games developers and slowed the approval for new titles. Haitong Securities crashed amid a probe for market violations.

The Hang Seng Index tumbled 2.3 per cent to 25,716 on Thursday, the most since a 4.2 per cent setback on July 27. The city's tech benchmark sank 4.5 per cent, also the biggest loss since July 27. The Shanghai Composite Index climbed 0.5 per cent to 3,693.13, reversing an earlier decline.

Tencent Holdings, China's biggest developer of online games, led losses with a 8.5 per cent slide while its closest rival NetEase slumped 11 per cent. Alibaba Group Holding, the owner of this newspaper, lost 5.8 per cent while Meituan fell 4.8 per cent.

China is said to have slowed the approval of new video games, sources told the Post, after regulators summoned major developers and streaming platform operators on Wednesday to find out how they will implement Beijing's new restrictions on minors. The meeting was also attended by the Cyberspace Administration of China and the Ministry of Culture and Tourism, Xinhua News Agency reported.

Education tech companies also slumped. Scholar Education slipped 7.8 per cent while New Oriental Education and Technology lost 5.5 per cent.

Separately, China's second-largest brokerage Haitong Securities said the China Securities Regulatory Commission is investigating the firm for potential breaches. The stock slumped 5.5 per cent in Hong Kong and 8.4 per cent in Shanghai.

COFCO Engineering & Technology surged 283 per cent to 13.60 yuan on its first day of trading. Beijing Caishiku Department Store jumped 44 per cent to 14.40 yuan while Shanghai Yizhong Pharmaceutical rallied 29 per cent to 48.99 yuan in their onshore debut.

China released its consumer price index on Thursday, showing inflation slowed while prices at factory gates rose to a 13-year high amid higher commodity prices and also due to low year-ago base effects. Producer prices jumped 9.5 per cent in August from a year earlier, versus a 9 per cent pace in July.

Traders are monitoring the European Central Bank meeting later Thursday for signs policymakers are scaling back stimulus. The ECB will shed light on its plan for bond purchases in the fourth quarter amid economic reopening while the delta variant spread.

(Source: South China Morning Post)

Technical Analysis:

Mini Hang Seng China Enterprise
Resistance: 9,200 (±100 or 1.10% upside)
Support: 9,000 (±100 or 1.10% downside)
MACD: Upward; Histogram: Positive
RSI: Neutral

Outlook: Moderately bullish

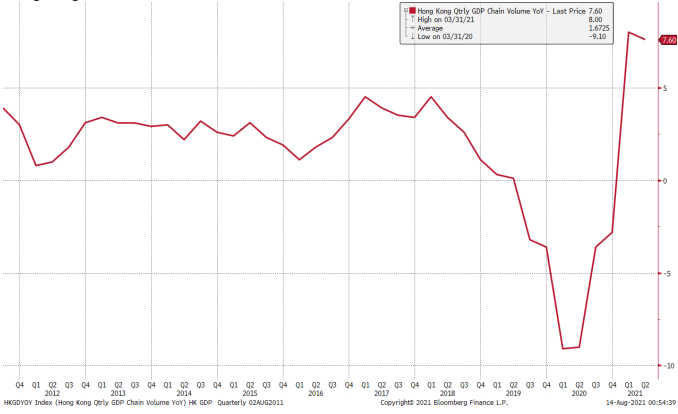
Historical Volatility	10 Days	30 Days	60 Days	90 Days
Hang Seng Futures	16.52	16.85	22.53	20.40
Mini Hang Seng Futures	16.51	16.85	22.53	20.40
HSCEI Futures	21.99	22.32	27.35	23.75
Mini HSCEI Futures	22.01	22.33	27.35	23.76

Hong Kong Economic Event	Period	Survey	Actual	Prior	Revised	
09/07/2021 16:32	Foreign Reserves	Aug	--	\$497.0b	\$494.8b	--
09/08/2021 13:00	Bloomberg Sept. Hong Kong Economic Survey					
09/13/2021 16:30	Industrial Production YoY	2Q	--	--	2.60%	--
09/13/2021 16:30	PPI YoY	2Q	--	--	1.70%	--

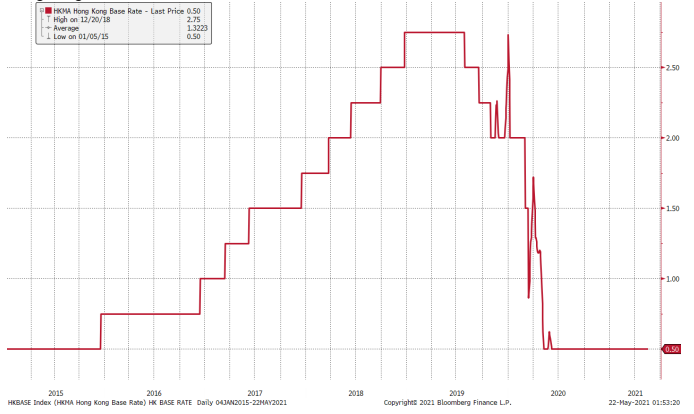
China Economic Event	Period	Survey	Actual	Prior	Revised	
09/09/2021 09:30	CPI YoY	Aug	1.00%	0.80%	1.00%	--
09/09/2021 09:30	PPI YoY	Aug	9.00%	9.50%	9.00%	--
09/09/2021 09:15	Aggregate Financing CNY	Aug	2800.0b	--	1060.0b	1056.6b
09/09/2021 09:15	New Yuan Loans CNY	Aug	1400.0b	--	1080.0b	1083.2b
09/09/2021 09:15	Money Supply M0 YoY	Aug	6.00%	--	6.10%	--
09/09/2021 09:15	Money Supply M1 YoY	Aug	4.50%	--	4.90%	--
09/10/2021 09:18	FDI YTD YoY CNY	Aug	--	--	25.50%	--
09/09/2021 09:15	Money Supply M2 YoY	Aug	8.40%	--	8.30%	--
09/13/2021 09:16	1-Yr Medium-Term Lending Facility Rate	15-Sep	--	--	2.95%	--

Pivotal Technical Levels :	Mini HSI Futures	Mini HSCEI Futures
R3	27308.3333	9911
R2	26577.3333	9584
R1	26111.6667	9375
Pivot	25846.3333	9257
S1	25380.6667	9048
S2	25115.3333	8930
S3	24384.3333	8603

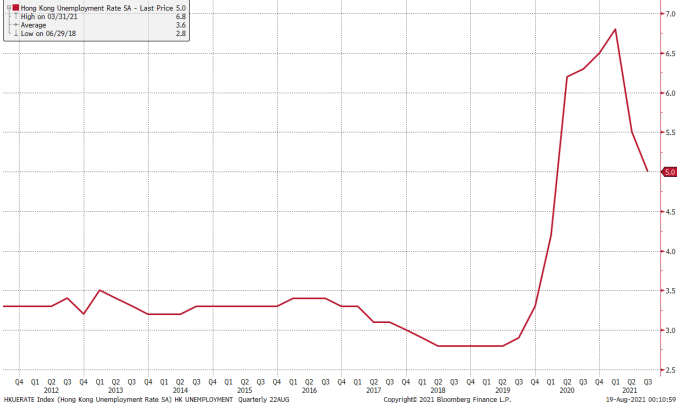
Hong Kong GDP Q on Q



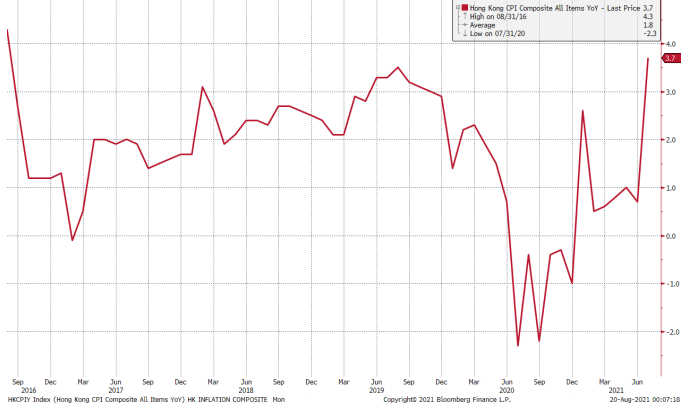
Hong Kong Base Interest Rate



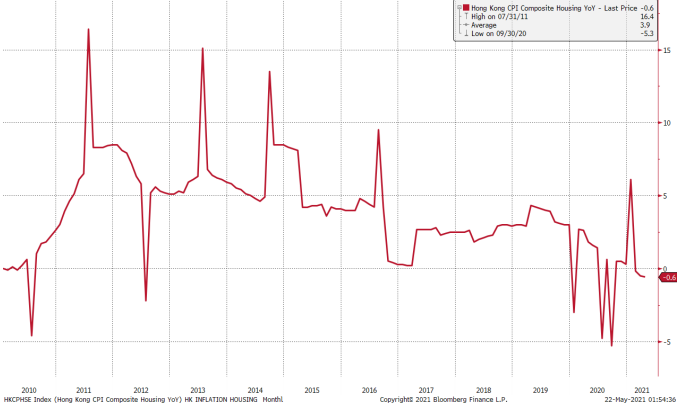
Hong Kong Unemployment Rate



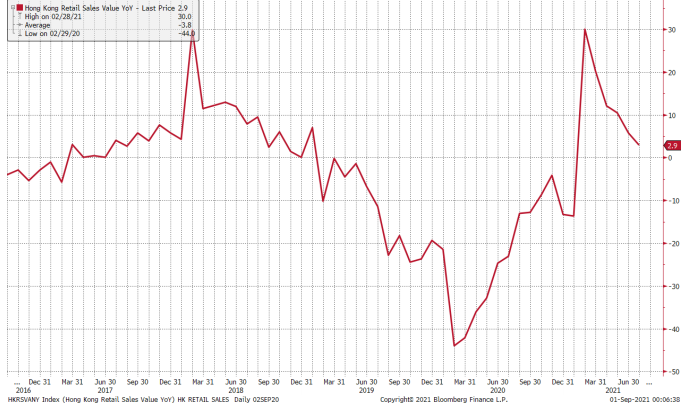
Hong Kong Composite Inflation



Hong Kong Housing Inflation



Hong Kong Retail Sale Value Y on Y %



(Source: Bloomberg)

Kenanga Futures Sdn Bhd (353603-X)

Dealing Desk: (603) 2172 3820 Fax: (603) 2172 2729 Email: futures@kenanga.com.my

Disclaimer: This document has been prepared for general circulation based on information obtained from sources believed to be reliable but we do not make any representations as to its accuracy or completeness.

Any recommendation contained in this document does not have regard to the specific investment objectives, financial background and the particular needs of any person who may read this document.

This document is for the information of addressees only and is not to be taken in substitution for the exercise of judgement and assessment by addressees in relation to any investment decision.

Kenanga Futures Sdn Bhd accepts no liability whatsoever for any direct or consequential loss arising from any use of this document or any solicitations of an offer to buy or sell any securities/underlying securities.

Kenanga Futures Sdn Bhd and its associates, their directors, and/or employees may have positions in, and may effect transactions in securities/underlying securities mentioned herein from time to time in the open market or otherwise,

and may receive brokerage fees or act as principal or agent in dealings with respect to these companies.